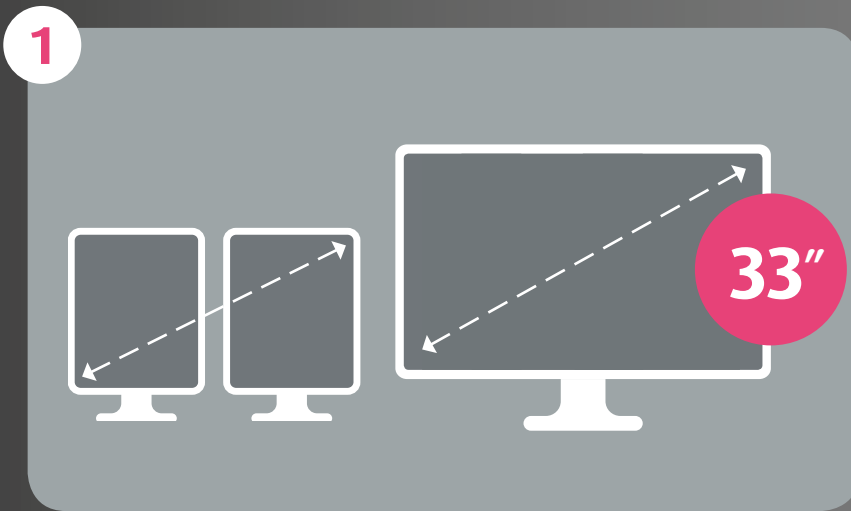
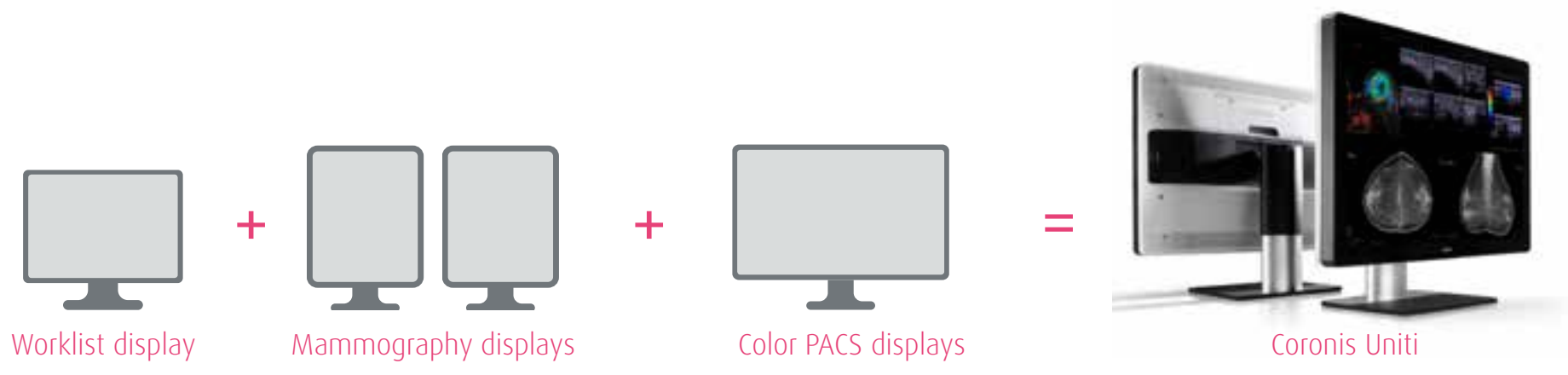


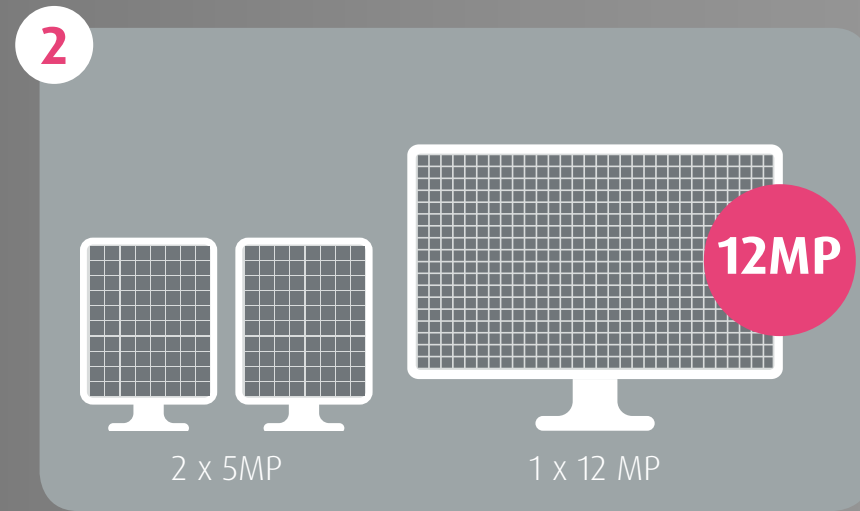
SOMETIMES, LIFE IS IN THE DETAILS

10 WAYS

Coronis Uniti helps improve breast cancer screening



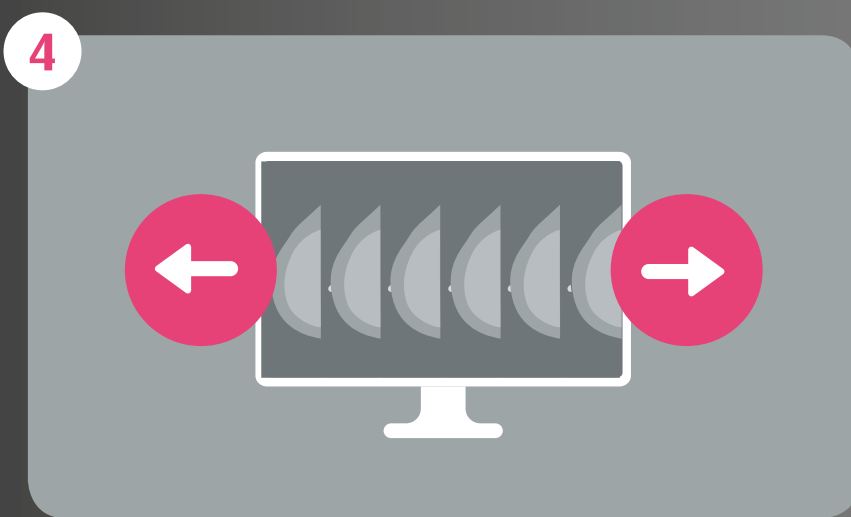
18%
More screen real estate compared to traditional dual 5MP display set-ups



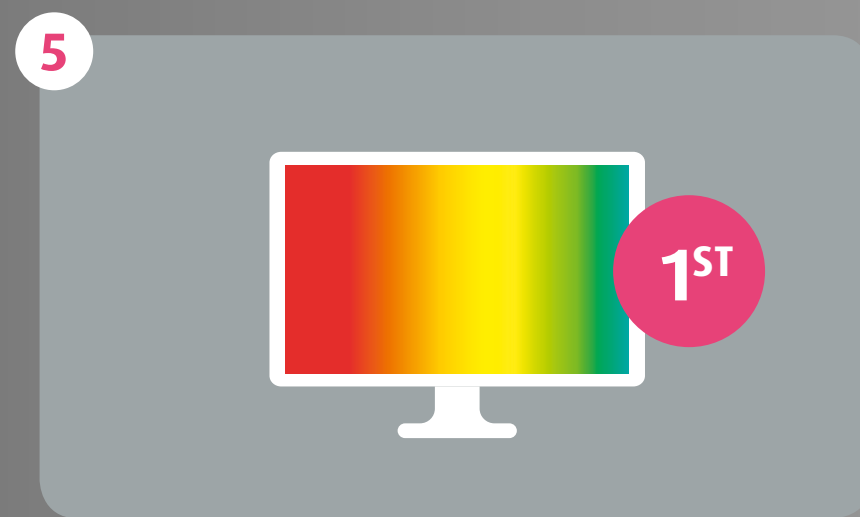
12%
More pixels compared to traditional dual 5MP display set-ups



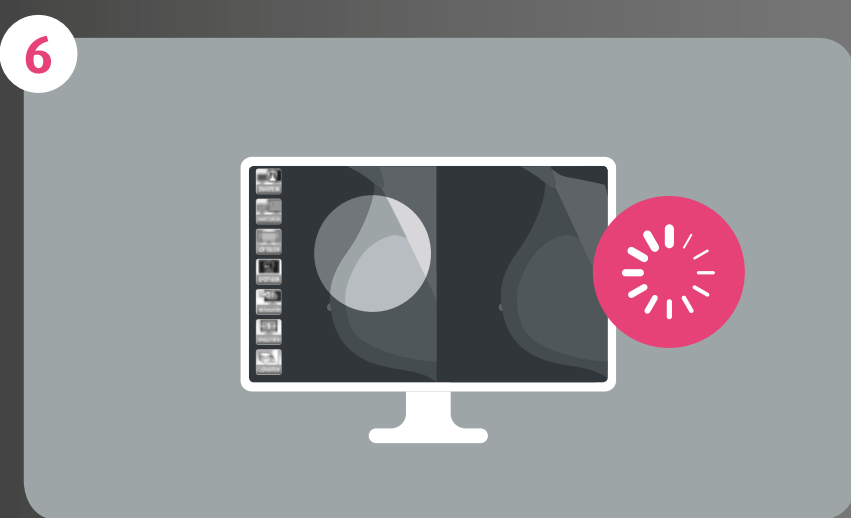
Reduced **eye fatigue** by optimizing radiologist field of vision***



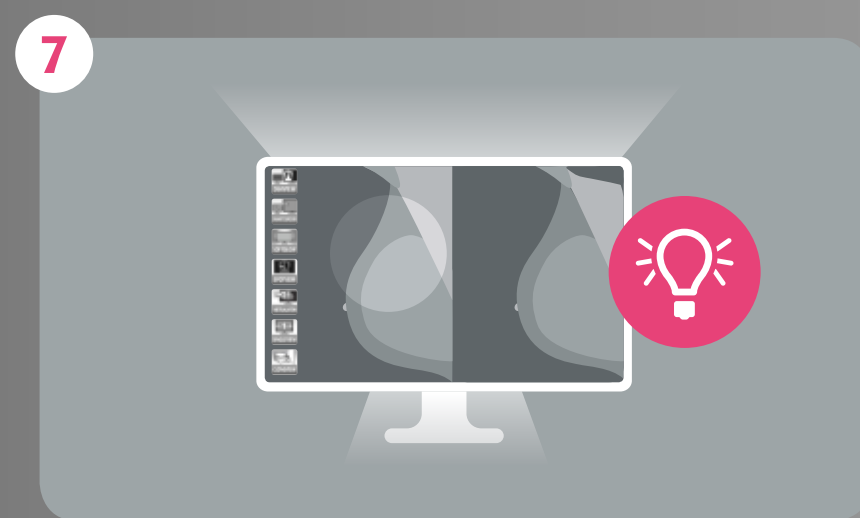
Optimized for 3D workflow to enable **fast scrolling and cine cycles**



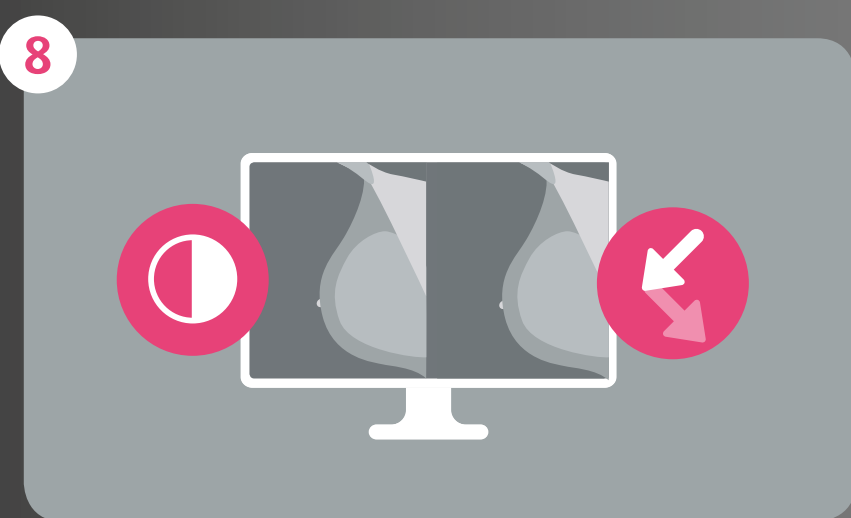
Industry-first **color calibration** ensures consistently accurate images



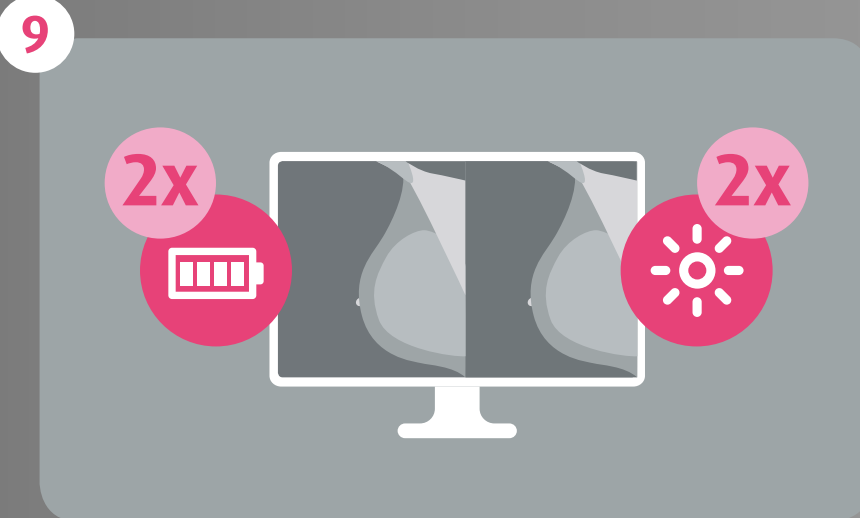
Unique intuitive workflow tools to **boost/dim illumination** for closer inspection



Integrated ambient lighting to reduce eye fatigue



Barco Optical Glass for exceptional **local contrast** and **reduced reflection**



2x the lifetime and **2x the brightness** of other mammography displays



REDUCED CLICKS

Up to **4 fewer mouse clicks** per screening and/or diagnostic study

* Marchessoux, C., et al. (2011). Validation of a new digital breast tomosynthesis medical display. Proceedings of SPIE, 7966, 79660R.

** Kimpe, T. R. & Xthona, A. (2012). Quantification of detection probability of microcalcifications at increased display luminance levels. Breast Imaging, Springer 7361, 490-497.

*** Norweck, J. T. et al. (2013). ACR-AAPM-SIIM Technical Standard for Electronic Practice of Medical Imaging. Journal of digital imaging, 1-15.